

Daventry

28 High Street, Daventry, NN11 4HU

T: 01327 879869

Offices also located in Northampton

stonhills.co.uk



**159 The Severn, Daventry  
NN11 4QT  
£196,000**



Access to the property is gained via a door into the entrance porch

#### ENTRANCE PORCH

Timber door to the entrance hall.

#### ENTRANCE HALL

Radiator. Stairs rising to first floor landing. Door to the kitchen/diner and cloakroom.

#### CLOAKROOM

Obscure glazed window to entrance porch. Low level WC. Wash hand basin.

#### KITCHEN/DINER

16'5 x 10'

Double glazed window to front aspect. 1 1/4 sink drainer unit with mixer tap over. Fitted in a range of wall and base mounted units with roll top work surfaces over. Space which may be suitable for white goods. Radiator. Wall mounted boiler. Walkway through to the lounge.

#### LOUNGE

16' x 12'4

Double glazed sliding patio door to rear garden. Radiator.

#### LANDING

Access to roof space. Doors to all bedrooms, bathroom and storage cupboard.

#### BEDROOM ONE

13'6 x 9'10

Double glazed window to front aspect. Radiator.

#### BEDROOM TWO

12'8 x 8'8

Double glazed window to rear aspect. Radiator.

#### BEDROOM THREE

10' x 7'7

Double glazed window to rear aspect. Radiator.

#### BATHROOM

Obscure double glazed window to front aspect. Low level WC. Enclosed panel bath with shower. Pedestal wash hand basin.

#### OUTSIDE

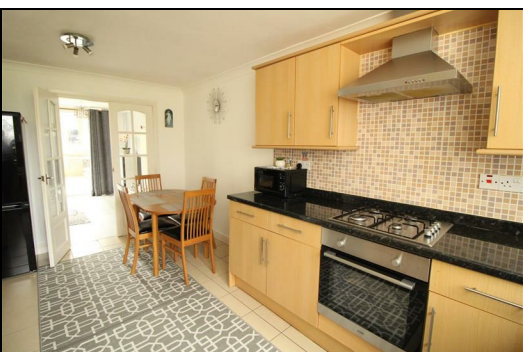
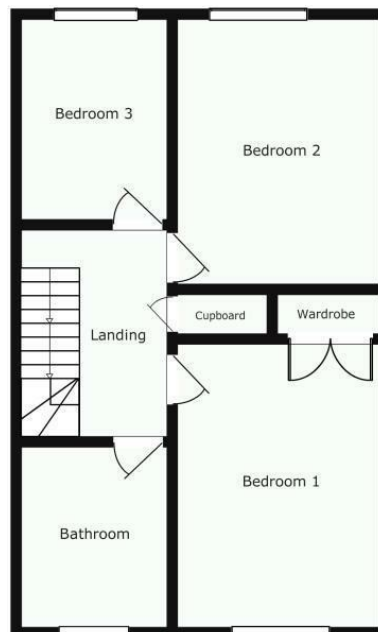
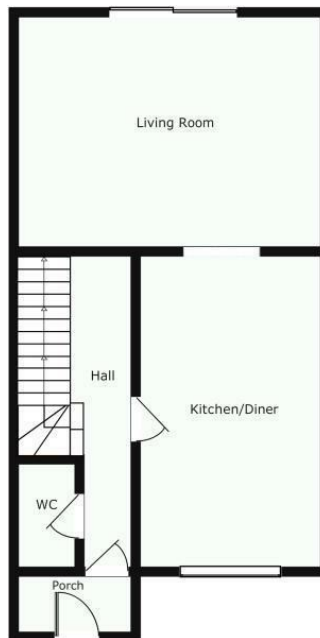
The front garden -

Mainly paved and low maintenance..

The rear garden -

Enclosed and laid to lawn with patio area.

PLEASE NOTE: CURRENT COUNCIL TAX BAND IS B.



**Zoopla.co.uk**

NATIONAL ASSOCIATION  
OF  
**NAEA**  
ESTATE AGENTS

O-E-A  
**Ombudsman**  
www.oea.co.uk

**rightmove.co.uk**  
The UK's number one property website

Appliances: Stonhills have not tested any equipment, fittings for services and so cannot verify they are in working order. The buyer is advised to obtain verification from their Solicitor or Surveyor. Measurements are for guidance only and are approximate. The buyer is therefore advised to check measurements if they are required for any other purpose e.g. fitted carpets, furniture, etc.